

MINUTES
COUNCIL COMMITTEE MEETING
MUNICIPAL DISTRICT OF PINCHER CREEK NO. 9
Tuesday, December 8, 2020 9:00 am
Via GoToMeeting

Present: Reeve Brian Hammond, Deputy Reeve Rick Lemire, Councillors Terry Yagos, Quentin Stevick and Bev Everts.

Staff: Director of Development and Community Services Roland Milligan, Director of Finance Meghan Dobie and Executive Assistant Jessica McClelland.

Reeve Brian Hammond called the meeting to order, the time being 9:05 am.

1. Approval of Agenda

Councillor Bev Everts

Moved that the agenda for December 8, 2020 be **approved** as presented.

Carried

2. Delegations

SASCI (Southwest Alberta Sustainable Communities Initiative)

Board members of SASCI, James Van Leeuwen, Dan Crawford, and David Simmons, Community Grant Specialist Liza Dawber and Administrator Carrie Cooley attended the meeting at this time and presented to Council an update on programs that SASCI is involved in. As their presentation was not available until the day of the meeting, it is attached to and forming part of these minutes.

SASCI Members left at this time, the time being 9:25 am.

LLG (Livingstone Landowners Group)

Norma Dougall and Roberta Lambright from LLG attended the meeting at this time to present to Council updates on LLG and the watershed concerns at this time. Currently LLG is researching the potential damage to the headwaters from prospective coal mine operations to the West of Pincher Creek. As their presentation was not available until the day of the meeting, it is attached to and forming part of these minutes.

LLG members left at this time, the time being 10:20 am.

2. Closed Session

Councillor Terry Yagos

Moved that Council move into closed session to discuss the following, the time being 10:30 am:

- a) Mediator Selection - PCEMSC Funding Formula – FOIP Section 23
- b) Municipal Operating Support Transfer (MOST) Community Organizations – FOIP Section 17
- c) 10:30 am - DEM Brett Wuth -COVID-19 Situation Update – FOIP Section 17
- d) Remuneration Strategy – FOIP Section 19
- e) CAO 2020 Performance Review - FOIP Section 19

Carried

Councillor Rick Lemire

Moved that Council move out of closed session, the time being 12:18 pm.

Carried

Councillor Bev Everts

Moved that the following items be tabled to the Council meeting of January 12, 2021:

- d) Remuneration Strategy – FOIP Section 19
- e) CAO 2020 Performance Review - FOIP Section 19

Carried

4 Adjournment

Councillor Terry Yagos

Moved that the Committee Meeting adjourn, the time being 12:19 pm.

Carried



Southwest Alberta Sustainable Community Initiative Box 1297, Pincher Creek, AB T0K 1W0
Tel 403-627-1750 Fax 403-627-1751 email sasci@telus.net

SASCI Presentation to M.D. of Pincher Creek #9
December 8, 2020
via GoToMeeting

The Southwest Alberta Sustainable Community Initiative (SASCI) welcomes this opportunity to update the M.D. of Pincher Creek on its current status and plans.

SASCI Board and Staff

James Van Leeuwen	Chairperson
Kevin Van Koughnett	Vice Chairperson
David Simmons	Treasurer
Dan Crawford	Director
Connie Simmons	Director
Marie Everts	Director
Steve Holly	Director
Carrie Cooley	Administrator
Liza Dawber	Community Grant Specialist

SASCI presently has five members at large in addition to the above nine members.

SASCI Mandate

- SASCI will enter its eighteenth year of operation in 2021.
- SASCI's charitable objects (purposes) are:
 - To educate people on economic, environmental and social issues that affect the sustainability of life in southwestern Alberta through forums, discussions, workshops, and other learning opportunities;
 - To undertake research into economic, environmental and social issues that affect the sustainability of life in southwestern Alberta, and disseminate the results to the public;
 - To undertake activities that are ancillary and incidental to the above charitable objects.
- Community development has always been an *implicit* role for SASCI, and will now become an *explicit* role.
- We understand community development to mean **growing people**.
- We understand 'community' to be a verb, not a noun.

SASCI in 2020

SASCI improved its business efficiency, effectiveness and capacities in 2020:

- Settled into a new office in the Pincher Creek Annex.
- Hired a part-time Administrator.
- Migrated to cloud-based bookkeeping and telecommunication solutions.
- *<A few words of welcome from SASCI's Administrator, Ms. Carrie Cooley>*

SASCI established its **BRIDGEBuilder** Initiative in 2020:

- BRIDGE = ***B***uilding ***R***egional ***I***vestment, ***D***evelopment & ***G***overnance ***E***xcellence.
- Took responsibility for Community Grant Specialist position after merging with Pincher Creek Community Development Initiative (PCCDI). Position supported under SASCI's **BRIDGEBuilder** Initiative since January 1, 2020.
- *<A few words of welcome from SASCI's Community Grant Specialist, Ms. Liza Dawber>*

SASCI supported several Agents in 2020:

- **Grasslands Restoration Forum** - raised, held and disbursed charitable funds for education programs and events (most programs and events cancelled in 2020).
- **Maker Centre Working Group** - managed and disbursed charitable funds for Pincher Creek Maker Centre initiative (inactive for much of 2020).
- **Pincher Creek Watershed Group** - received and held charitable funds for Blueweed Blitz event (event postponed until 2021).
- **Waterton Biosphere Reserve Association** - received and processed charitable funds for Carnivores and Communities program.
- **Twin Butte Community Society** - received and processed charitable funds for Twin Butte Community Hall renovation and expansion project.
- **Adaptable Outdoors** - received and processed charitable funds for Paddling Program.
- **Chamber of Commerce** - invested SASCI funds in Business Recovery Support Program.

SASCI is currently crafting an 'umbrella' Agency Agreement to cover all future projects that an Agent undertakes with SASCI's support, providing a more convenient alternative to SASCI's project-based Agency Agreement.

SASCI looks forward to onboarding three new Agents before the end of 2020 with the help of its new Agency Agreement:

- **Pincher Creek Family Resource Society**
- **Pincher Creek Health Professional Attraction & Retention Society**
- **Pincher Creek Trail Breakers**

SASCI in 2021

- Funds in place to cover operations and *BRIDGEBuilder* Initiative through 2021.
- Undertake a robust strategic planning exercise early in 2021.
- Work with the Town, M.D., Chamber of Commerce and other organizations in the community in responding to challenges and opportunities presented by the COVID pandemic.
- Establish a committee and program for communication and outreach.
- Promote SASCI's bookkeeping, administrative and charitable fundraising services.
- Support active Agents, including fostering collaboration among Agents.
- Onboard new Agents.
- Support the Community Grant Specialist under the *BRIDGEBuilder* Initiative.
- Contract a Fund Development Specialist to start building a **Community Legacy Fund**, using funds already secured for the position under the *BRIDGEBuilder* Initiative.
- Establish a leadership development program under the *BRIDGEBuilder* Initiative.
- Engage key community stakeholders in the *BRIDGEBuilder* Initiative.
- Secure longer-term funding support for the *BRIDGEBuilder* Initiative and for operations.
- Foster and facilitate community and collaboration (Build Bridges).

GROW PEOPLE.

GROW COMMUNITY.

Watershed Considerations Oldman River Basin

PRESENTATION TO MD OF PINCHER CREEK COUNCIL

DEC. 8, 2020



AGENDA

- ▶ Water Policy Framework
- ▶ State of the Oldman River Watershed
- ▶ Current Mechanisms to Access Water
- ▶ Risks of Changing Water Allocation Order

*Water Policy Direction – Closed Basins

- ▶ **Limits for water allocations reached or exceeded (August 2006)**
- ▶ **Closed Bow, Oldman, South Saskatchewan River subbasins to:**
 - ▶ Recover and conserve aquatic environment
 - ▶ Reduce risk to existing licence holders
 - ▶ Ensure Alberta meets obligations to downstream neighbours
- ▶ **Address knowledge gaps through monitoring, research**

**Water Allocation Policy for Closed River Basins in the South Saskatchewan River Basin Directive: Reviewed Sept. 22, 2016*

Livingstone Landowners Group - December 8, 2020

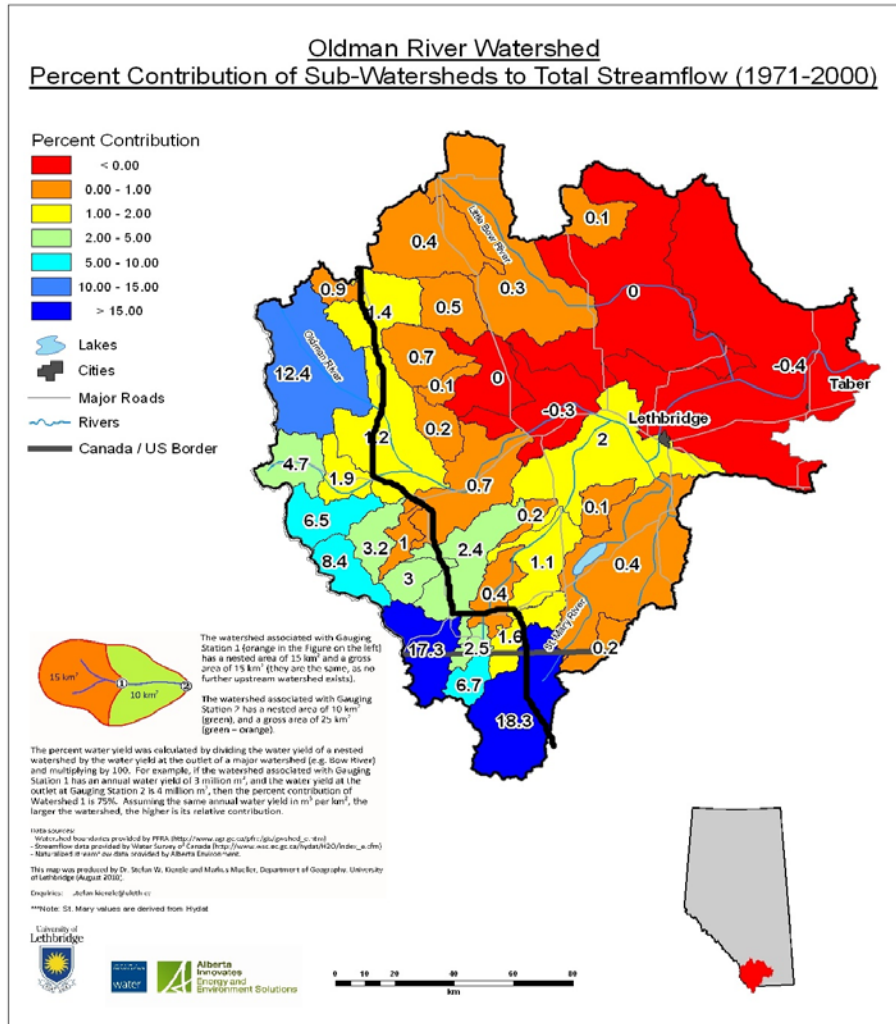
Characteristics of the Watershed



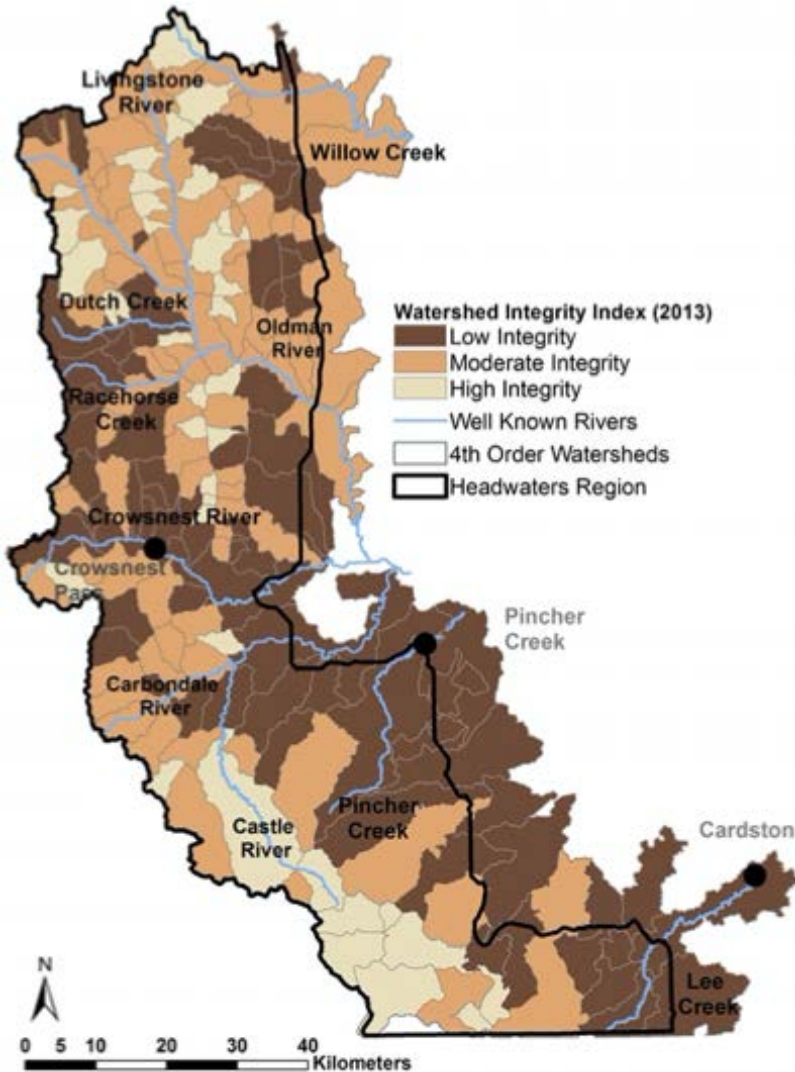
- ▶ Highly variable water flows
- ▶ Climate change impacts
- ▶ Region susceptible to drought
- ▶ Mountain sub-basins critical
- ▶ High frequency of deficits to lower priority users
- ▶ Water conservation objectives often unmet

Approximately 90%
of the water in the
Oldman River
comes from the
headwaters

From Dr. Stefan Kienzle at the
University of Lethbridge



Watershed Integrity Index



95% of headwaters have low to moderate integrity

Watershed Health Depends on Mountain Sub-basins

* **Table 7.8: Overall State of the Watershed Ranking for all Indicators by Sub-basins**

Indicator	Sub-Basins						
	Mountain	Foothills	Southern Tributaries	Prairie		Mainstem	Oldman Watershed
Terrestrial and Riparian	Good	Good	Fair	Poor		Good	Fair
Water Quantity	Good	Fair	Poor	Fair	Poor	Poor	Fair
Water Quality	Good	Fair	Fair	Fair	Poor	Good	Fair
Overall	Good	Fair	Fair	Fair	Poor	Fair	Fair

*South Saskatchewan River Basin in Alberta Water Supply Study 2010

Water Availability

- ▶ **Closed except for legislated exceptions**
- ▶ **Water market, through licence transfers**
- ▶ **Legislated Exceptions for Crown Reserve (BOSS Allocation)**
 - ▶ First Nations projects
 - ▶ Water Conservation projects
 - ▶ Storage projects to protect the aquatic environment & existing licence holders
 - ▶ Applications complete when the order was filed in 2007
- ▶ **Oldman River Basin Water Allocation Order**

Oldman River Allocation Order

- ▶ Applies to withdrawals directly from headwaters area (region upstream of the Oldman River Dam (MD of Pincher Creek, MD of Ranchland, Municipality of Crowsnest Pass))
- ▶ Up to 11,000 acre-feet of water available for defined users:

	Reserved Total	Licensed/applied for	Unallocated
Non-industrial (municipal, recreation, rural communities, commercial agriculture – non-irrigation)	1,500	326	1,174
Industrial	150	150	0
Irrigation	9350	1,295	8,055
Total	11,000 acre-feet	1,771 acre-feet	9,229 acre-feet

Proposed Government Rule Change

- ▶ Eliminate categories of users
- ▶ Set one overall limit, including industrial
- ▶ Set aside 20% for environmental support
- ▶ Provides coal companies access to new water licences at little or no cost
- ▶ Reduces reserve for future needs of other users

Risks of New Approach

- ▶ Permanent damage to headwaters
- ▶ Intense pressure on water source
- ▶ Serious pollution risks
- ▶ Threatens drinking water, aquatic ecosystems, sustainable growth



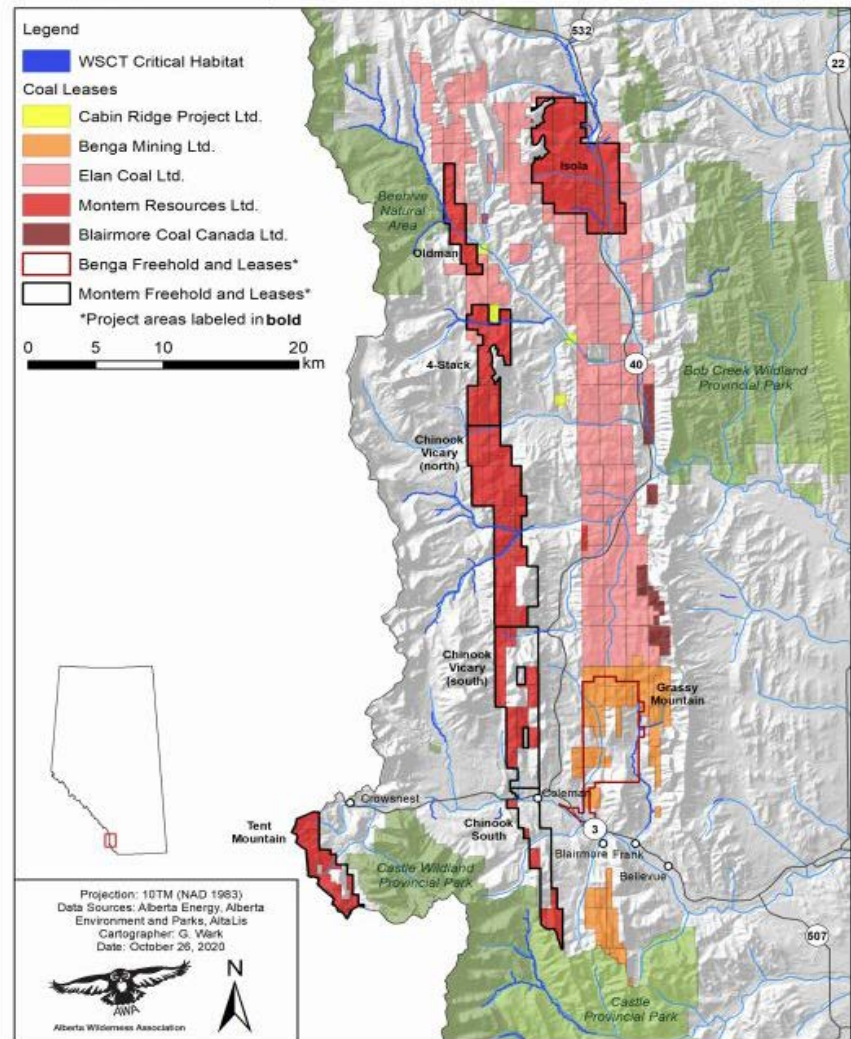
Mountain Sub-Basins

- ▶ High basin yield
- ▶ Few water licences
- ▶ Frequent WCO deficits
- ▶ Good water quality



Proposed Coal Mines

- ▶ More than 800 sq km of approved coal leases
- ▶ Located in headwaters
- ▶ Intense water users
- ▶ Known source of pollutants
- ▶ Excavate the water tables
- ▶ Disrupt & destroy streams, springs, wetlands



Important Considerations

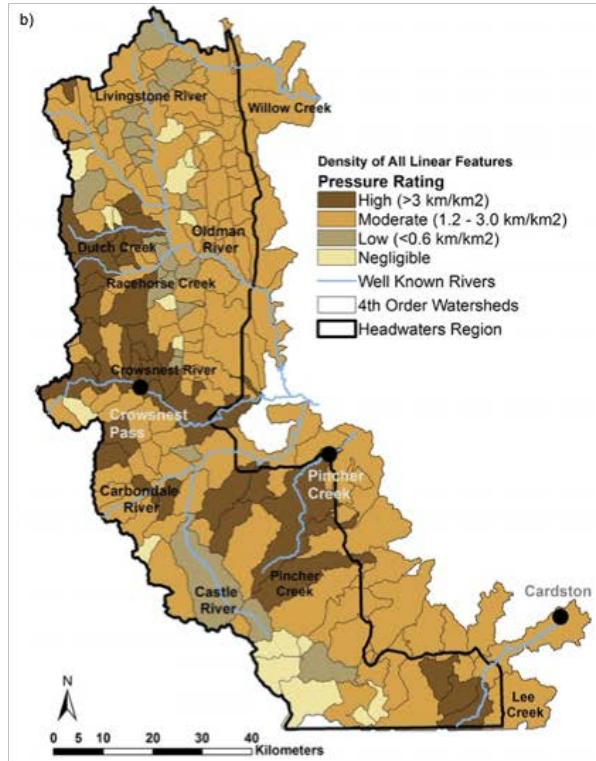
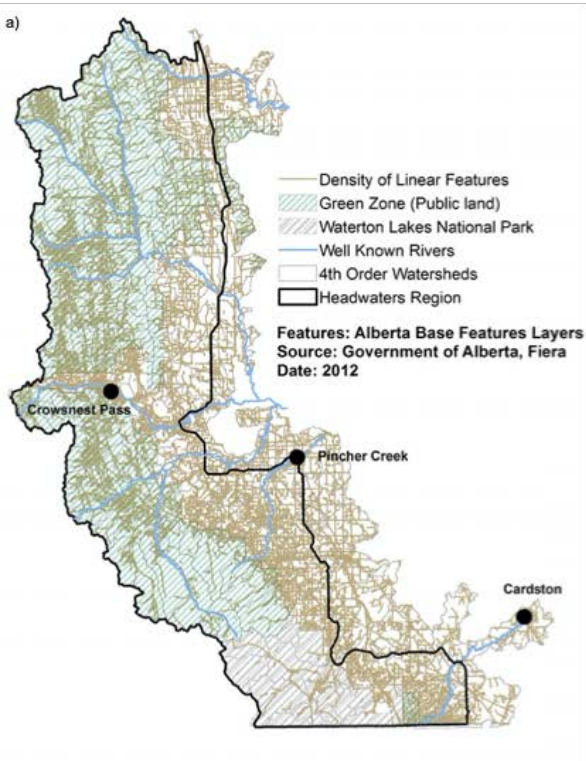
- ▶ Location in the mountain sub-basins is a major issue
- ▶ Existing water policies have NOT achieved objectives
- ▶ Still lack key data on stream flows and water quality
- ▶ Coal mining impact extreme and irreversible

Questions?

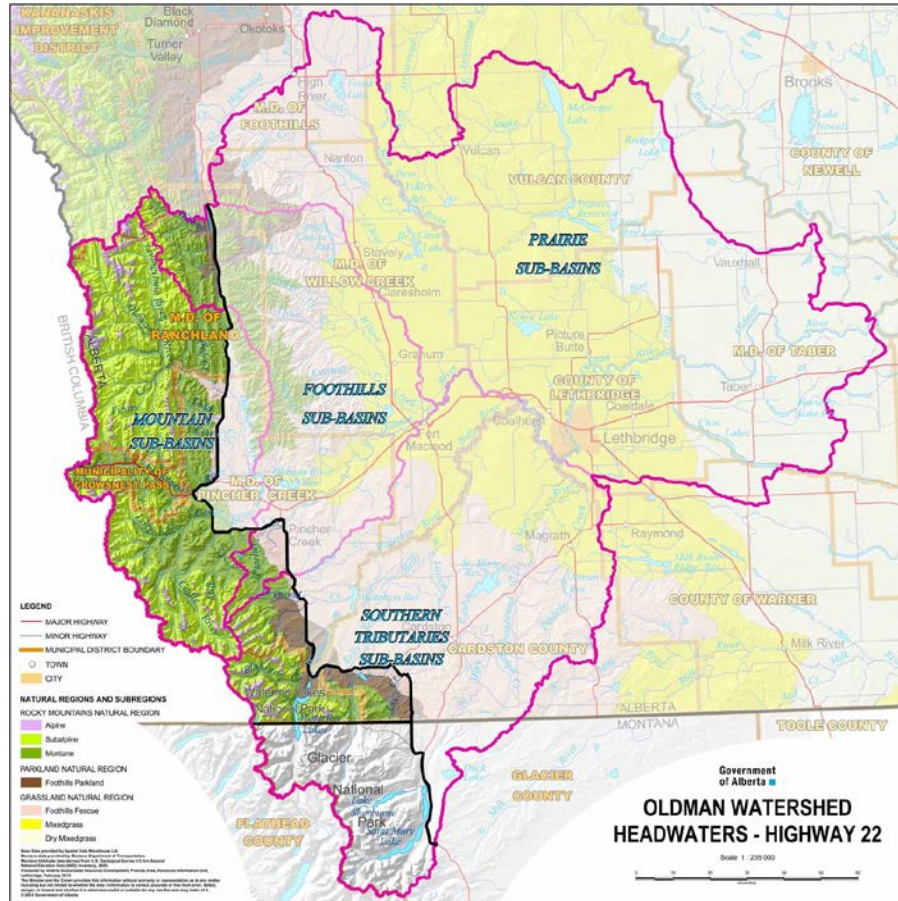


Background Information

Linear features



The Oldman headwaters - the rocky mountains



Map created by the Government of Alberta

Water Basin Closure Themes

- ▶ Limits for water allocations reached or exceeded (2006)
- ▶ Increasing demands for water creating supply risks
- ▶ Poor and declining health of the aquatic environment
- ▶ Knowledge gaps re: impact of changes to water flows

Water Policy Framework

- ▶ SSRB Water Management Plan approved 2006
- ▶ Bow, Oldman, SSRB Allocation Order (2007)
- ▶ Oldman River Basin Water Allocation Order (2003, amended 2010)
- ▶ Water Supply Study (2010)
- ▶ Water Allocation Policy Directive For Closed River Basins (2016)
- ▶ Implementation Review SSRB Water Management Plan (2018)